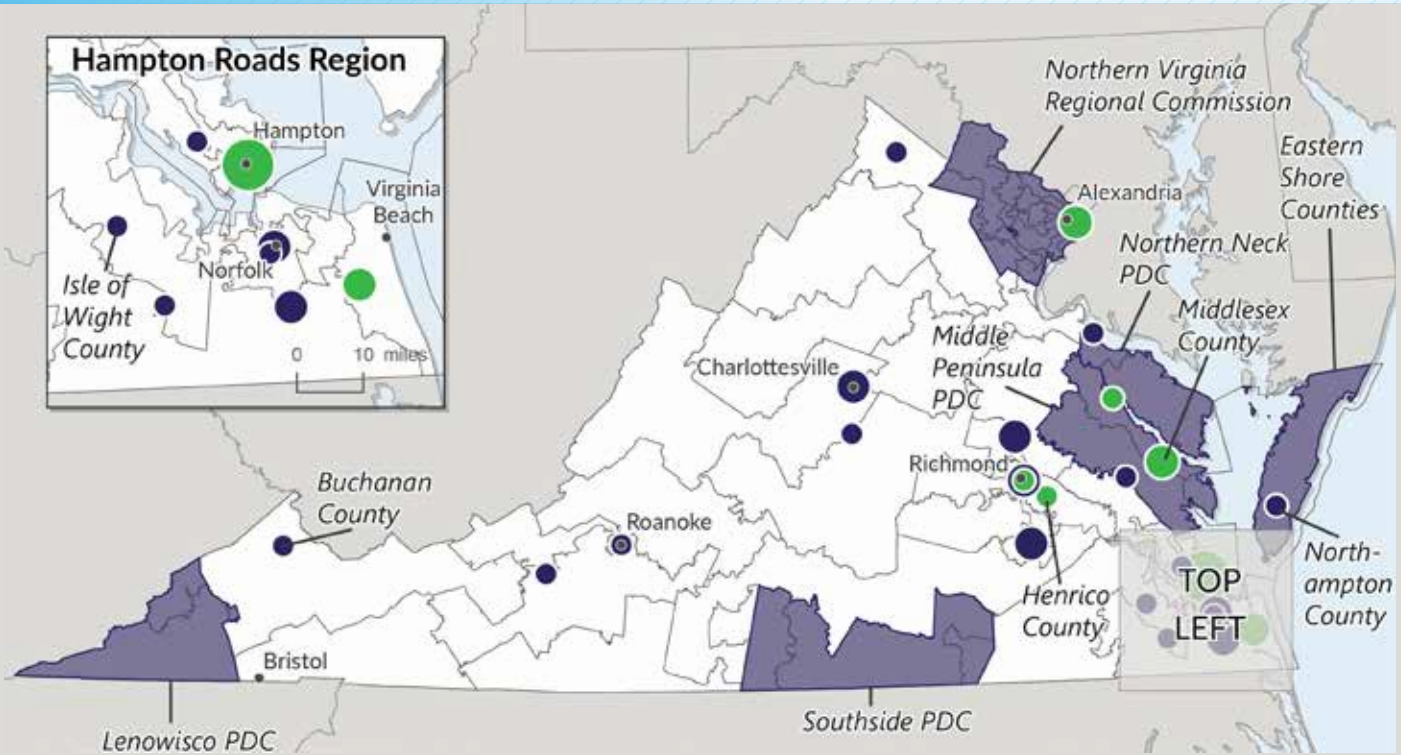


# RGGI GRANTS

## COMMUNITY FLOOD PREPAREDNESS FUND



In 2020, Virginia passed the Clean Energy and Community Flood Preparedness Act to protect Virginians from growing flood risk from more frequent and intense storms and sea level rise. This allowed the Commonwealth to join the Regional Greenhouse Gas Initiative (RGGI) and established the Community Flood Preparedness Fund (CFPF). RGGI is a market-based program of 11 states that generates funds while reducing electricity sector emissions. Half of its proceeds fund low-income energy efficiency programs and 45% fund the CFPF.

The CFPF provides loans and grants for projects, studies, and planning throughout the Commonwealth to identify and address flood vulnerability for communities. CFPF funds can build capacity in localities that otherwise would not have the resources to develop comprehensive flood vulnerability assessments and action-oriented flood mitigation approaches.

## CITY OF RICHMOND

The City of Richmond is home to over 225,000 residents and includes a number of low-income geographic areas as well as populations with a high social vulnerability index score. The City needs numerous stormwater infrastructure improvements to provide increased flood protection, continued access to key transportation pathways, and improved public safety for major areas of Richmond's underserved populations and communities.



**CITY OF RICHMOND**



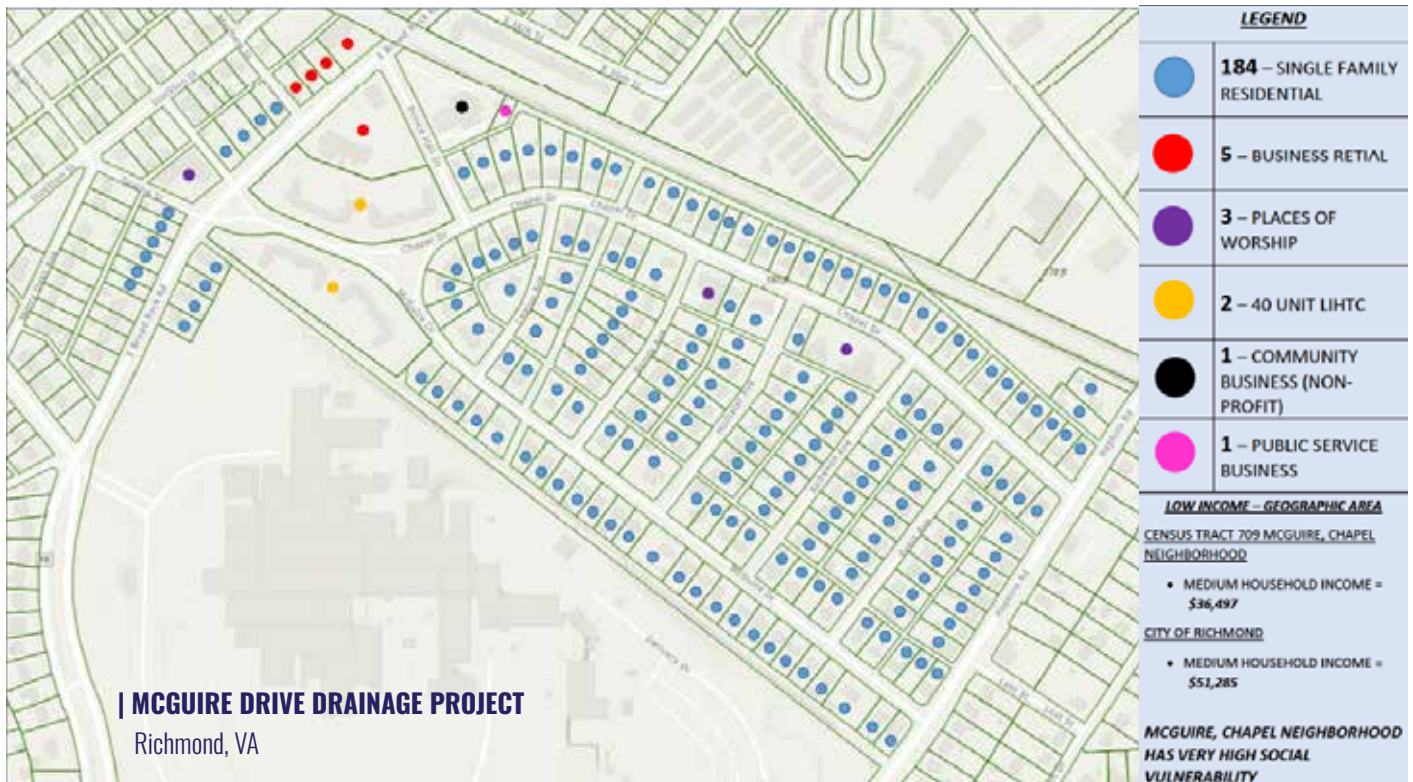
**\$1,246,047**



Grace Tucker, EDF  
gtucker@edf.org



VIRGINIA CONSERVATION NETWORK  
701 E FRANKLIN STREET, SUITE #800 | RICHMOND, VA 23219  
804-644-0283 | VCN@VCNVA.ORG | WWW.VCNVA.ORG



## 1 MCGUIRE AND CHAPEL DRIVE DRAINAGE IMPROVEMENTS PROJECT

Southside Richmond experiences repetitive flooding due to insufficient stormwater systems in the neighborhood. With a \$1,100,000 CFPF grant, the City of Richmond will install new and upgraded stormwater conveyances with larger piping, stormwater inlets, and drainage channels in the McGuire/Chapel neighborhood.

## 2 RICHMOND, MANCHESTER, AND SHOCKOE BOTTOM NEIGHBORHOODS

The Northside and Southside levee system protects over \$900 million of property value in the City of Richmond. Since their construction in the 1990s, there has been no comprehensive survey or digital drawing information for the system in its entirety. With a \$103,500 CFPF award, Richmond will establish a digital baseline for the system, allowing updates to emergency response flood plans and the development of outreach tools for the communities who live alongside the levees.

## 3 RICHMOND STAFF PLANNING AND CAPACITY BUILDING

The City of Richmond's Water Resources Division currently reviews hydrology and hydraulic analyses and no rise certifications for development plans and projects proposed in floodways. With this \$23,153 CFPF award, the city will be able to outsource these reviews to a third-party consulting firm so the City's engineer can better learn how to perform these reviews in the future.

## 4 WINDSOR FARMS RESILIENCE PLAN DEVELOPMENT

The City of Richmond's Water Filtration Plant is protected by a flood project and levee system constructed in the early 1990s. This \$19,394 CFPF award will fund direct surveying and engineering consulting services to provide the City with a comprehensive survey and baseline digital drawing information to organize future needs and emergency flood response plans.

