



Offshore Renewable Energy Leasing Process

U.S. Department of the
Interior

Bureau of Ocean Energy
Management Regulation and
Enforcement

Virginia Commonwealth

Energy Policy Act 2005

Gave the Secretary of the Interior the authority to regulate a broad spectrum of activities:

- *Renewable Energy*
- *Alternate Use*
- *EPA Act Section 388: Competition*

Major Framework Elements

- Coordination (throughout rule)
 - Federal/State/Local Task Forces
- Leasing Process and Issuance (Subpart B)
 - Commercial & Limited Leases
 - Competitive & Noncompetitive Leasing
 - Research Activities
- Payments (Subpart E)
 - Bonding, Payments, Revenue Sharing
- Plans (Subpart F)
 - Site Assessment and Construction & Operations
 - General Activities
- Conduct of Approved Plan Activities (Subpart H)
 - Environmental & Safety Monitoring & Inspections
- Decommissioning (Subpart I)

Initiating the Leasing Process

- BOEMRE establishes an **intergovernmental task force** in response to a **requesting State** or the receipt of an **unsolicited application**
- BOEMRE, in consultation with the task force, develops a **Request for Interest (RFI)** to gauge level of interest and determine competitive interest
 - BOEMRE determines competitive interest and proceeds with the **competitive leasing process**
 - BOEMRE determines no competitive interest and proceeds with the **noncompetitive leasing process**

Competitive Leasing Process

- Call for Information and Nominations
- Area Identification
- Proposed Sale Notice (60-day comment period)
- Final Sale Notice
- Auction and Award

Concurrent NEPA and CZMA Reviews

Noncompetitive Leasing Process

- Receive unsolicited request for lease or grant
- Issue public notice describing proposal and requesting information to determine whether competitive interest exists
- Continue with noncompetitive process if no competitive interest exists

Concurrent NEPA and CZMA Reviews

When will the NEPA Process begin?

- NEPA begins when there is to be a major Federal action that might significantly affect the quality of the human environment.
- A “major Federal action” can be:
 - Decision to hold a lease sale (competitive)
 - Decision to approve a plan (noncompetitive)

Impact Producing Factors

- Visual and aesthetic interference
- Vessel traffic
- Air emissions
- Bottom disturbance
- Discharges
- Infrastructure (empl and presence)
- Noise
- Lighting



Environmental Impact Statement (EIS)

Steps:

- Public Scoping Meetings and Comment Period
- Draft EIS
- Public Hearings and Comment Period
- Final EIS
- Record of Decision



BOEMRE – State Task Forces

- Coordination with affected State, local, and tribal governments and Federal agencies
 - Does not replace consultation requirements under existing Federal laws and regulations
- Effort to get all government parties at the same table to facilitate information sharing early and throughout the process
- BOEMRE will consider task force input as it makes renewable energy leasing decisions

State Activities Update

- Task Force States:
Delaware,
Rhode Island,
Massachusetts,
New Jersey,
Virginia, Maryland,
Maine
- On the horizon:
New York, North
Carolina, South
Carolina, Florida



Massachusetts

- Renewable Energy Portfolio Standard
- Renewable Energy Task Force
- Cape Wind
 - On April 28th Secretary Salazar signed a record of decision
 - Cleared the way to offer a commercial lease to the developer.
 - 130 – 3.6 MW turbines – 468 MW.
- Ocean Management Plan

Rhode Island

- Renewable Portfolio Standard
- Renewable Energy Task Force
- Special Area Management Plan (SAMP)
 - Insure compatibility between offshore wind and sustainability of the offshore resource
- Potential Area for wind Farm Development Identified

New Jersey

- Renewable Portfolio Standard
 - Energy Master Plan
- Renewable Energy Task Force
- Baseline Environmental Study
- Three Interim Policy Leases
- Met Tower Reimbursement
- Offshore Renewable Energy Credit for Offshore Wind

Delaware

- Renewable Portfolio Standard
- Renewable Energy Task Force
- One IP Lease issued in November 2009
- Developer and Delmarva Power PPA
- Cooperative Research and Development Agreement with DOE
- Request For Interest Published this past Spring
 - Received 2 Expressions of Interest

Maryland

- Renewable Portfolio Standard
- Renewable Energy Task Force
- Coastal Community Stakeholder Outreach
- Potential RFI Area

South Carolina

- SE Regional Wind Symposium
- Coastal Wind For Schools
- Palmetto Winds Research - Wind Mapping
 - DOE Grant Supplemented by Santee Cooper
 - Six buoys and two Observation Stations
- Identification of Exclusion Zones

Virginia

- Multi-University Collaborative Research (VCERC)
- Renewable Energy Portfolio Goal
- Renewable Energy Task Force
- Triple Credit for Offshore Wind
- Virginia Offshore Wind Coalition Virginia
- Offshore Wind Development Authority

In the Mid-Atlantic: Virginia

- **August – September 2009**: two unsolicited applications from Virginia based developers
- First task force meeting held **December 8, 2009**
- Mapped proposed RFI area and sent to NASA, DOD and USCG for review
- DOD response indicated significant activity in VA Capes Operating Area
- Fifty-two of 70 leasing blocks were excluded from development
- Met with DOD on **March 17th, 2010** to discuss “Exclusion Zones”
- Second Task Force meeting held **April 27, 2010**
- DOD opened additional area to the east and west providing a total of 49 blocks
- State of Virginia is presently evaluating Map and considering applying for research leases
- Next steps-
 - Prepare draft RFI
 - Publication of RFI in Federal Register
 - Determination of competitive interest
 - Competitive and/or noncompetitive leasing process

BOEMRE Point of Contact: Al Pless
(703)-787-1525 or
al.pless@BOEMRE.gov

VACAPES/VCERC WIND FARM PROPOSAL – FLEET ASSESSMENT

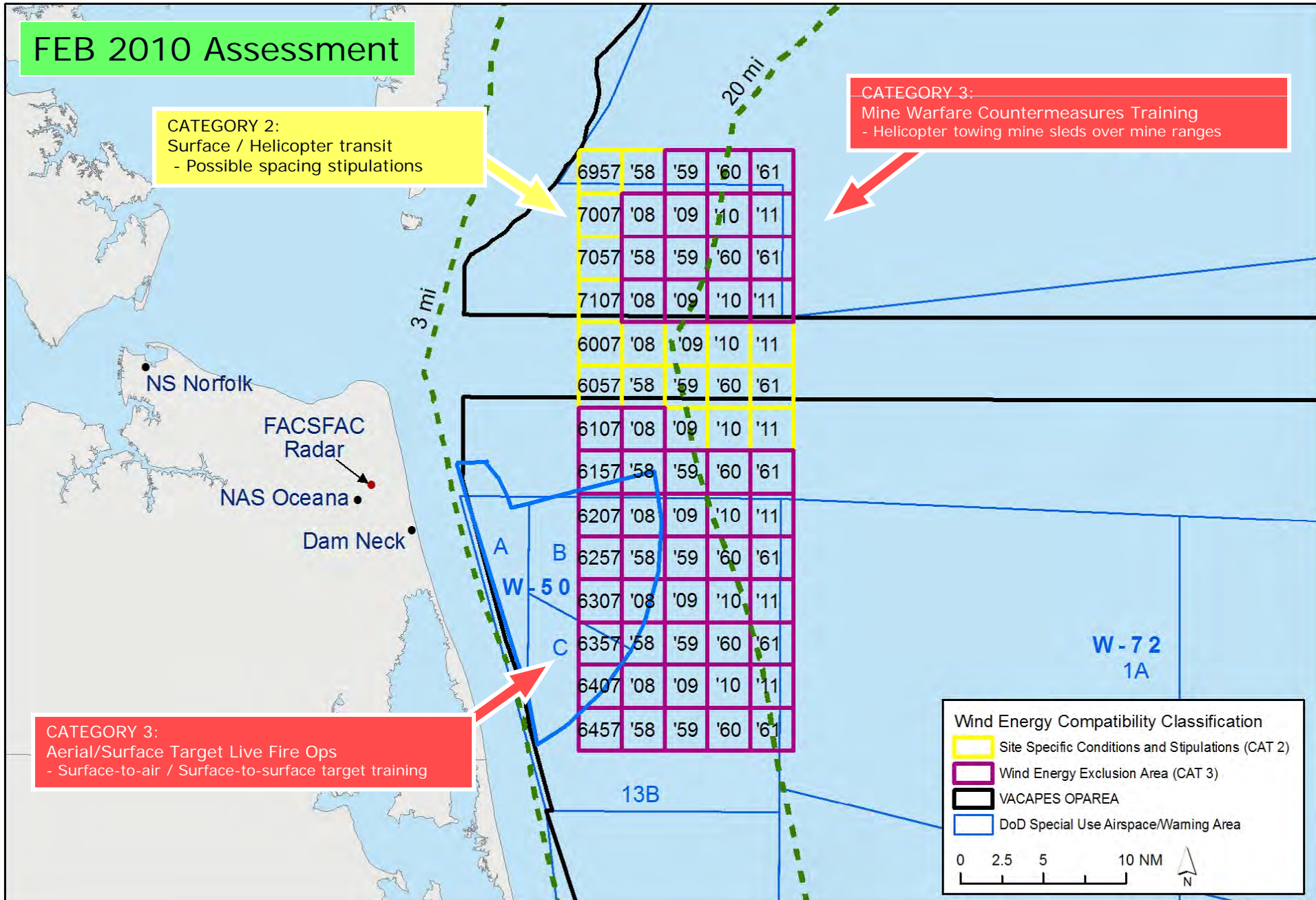
FEB 2010 Assessment

CATEGORY 2:
Surface / Helicopter transit
- Possible spacing stipulations

CATEGORY 3:
Mine Warfare Countermeasures Training
- Helicopter towing mine sleds over mine ranges

CATEGORY 3:
Aerial/Surface Target Live Fire Ops
- Surface-to-air / Surface-to-surface target training

6957	'58	'59	'60	'61
7007	'08	'09	'10	'11
7057	'58	'59	'60	'61
7107	'08	'09	'10	'11
6007	'08	'09	'10	'11
6057	'58	'59	'60	'61
6107	'08	'09	'10	'11
6157	'58	'59	'60	'61
6207	'08	'09	'10	'11
6257	'58	'59	'60	'61
6307	'08	'09	'10	'11
6357	'58	'59	'60	'61
6407	'08	'09	'10	'11
6457	'58	'59	'60	'61



Wind Energy Compatibility Classification

- Site Specific Conditions and Stipulations (CAT 2)
- Wind Energy Exclusion Area (CAT 3)
- VACAPES OPAREA
- DoD Special Use Airspace/Warning Area

0 2.5 5 10 NM

N

RELEASABLE

VACAPES/VCERC WIND FARM PROPOSAL – FLEET ASSESSMENT

APR 2010
Lease Block Extension Consideration

CATEGORY 2:
Surface Ship, Helicopter Transit
- Possible tower spacing stipulations
- Possible tower height restrictions
- Possible radar tracking interference with FACSFAC radar

Drone Target Events

- Dam Neck launch site (one-of-a-kind facility)
- Remotely operated surface and aerial targets
- Transits W-50 for targeting in W-72 (1A/1B)
- Returns via transit corridor
- Lands in W-50 / W-72(13) for retrieval

CATEGORY 3:
Aerial/Surface Target Live Fire Ops
- Surface-to-air / Surface-to-surface target training

CATEGORY 3:
Air-air/ Surface-surface Live Fire
Air-surface Live Ordnance
- Mk80 series bombs, Hellfire, Maverick
- Live fire training against towed banners

CATEGORY 2:
Air Intercept Control Training
Helicopter Transit
- Possible radar tracking interference
- Possible tower spacing limitations
- Possible tower height restrictions

D3	6957	'58	'59	'60	'61	A1	B1	C1
D4	7007	'08	'09	'10	'11	A2	B2	C2
D5	7057	'58	'59	'60	'61	A3	B3	C3
D6	7107	'08	'09	'10	'11	A4	B4	C4
D7	6007	'08	'09	'10	'11	A5	B5	C5
D8	6057	'58	'59	'60	'61	A6	B6	C6
	6107	'08	'09	'10	'11	A7	B7	C7
	6157	'58	'59	'60	'61	A8	B8	C8
	6207	'08	'09	'10	'11	A9	B9	C9
	6257	'58	'59	'60	'61	A10	B10	C10
	6307	'08	'09	'10	'11	A11	B11	C11
	6357	'58	'59	'60	'61	A12	B12	C12
	6407	'08	'09	'10	'11	A13	B13	C13
	6457	'58	'59	'60	'61	A14	B14	C14
						A15	B15	C15
						A16	B16	C16
						A17	B17	C17

Drone Transit Corridor

Wind Energy Compatibility Classification

- Site Specific Conditions and Stipulations (CAT 2)
- Wind Energy Exclusion Area (CAT 3)
- VACAPES OPAREA
- DoD Special Use Airspace/Warning Area

0 2.5 5 10 NM

Questions?